

PRINCE WILLIAM





At 60 metres and crowned by ten square-rigged sails Prince William cuts an impressive sight whether heeling under the wind or cruising the calms of distant shores. Currently used as a sail training vessel, the Prince William is one of two magnificent brigs operated by the Tall Ships Youth Trust, a charity founded in 1956 and previously called The Sail Training Association. To diversify its work and to attract a new audience of young people into sail training – having sailed over 1.5 million nautical miles and trained over 80,000 trainees – the charity is acquiring now a new challenger fleet of four 22 metre yachts and offering Prince William for sale.





With a total sail area of 949 square metres and consisting of seven staysails, a spanker and ten square sails Prince William can be operated under power by just seven core crew who then form the backbone of the sailing crew. While having the appearance of a classical tall ship she is equipped with a full specification of modern equipment including two controllable pitch propellers, air conditioning, water makers, satellite communications, radar and a bow thruster. Suitable for refit into a luxury ocean going yacht or a continued career as a training vessel Prince William is a rare opportunity to own and sail a modern square rigged brig.



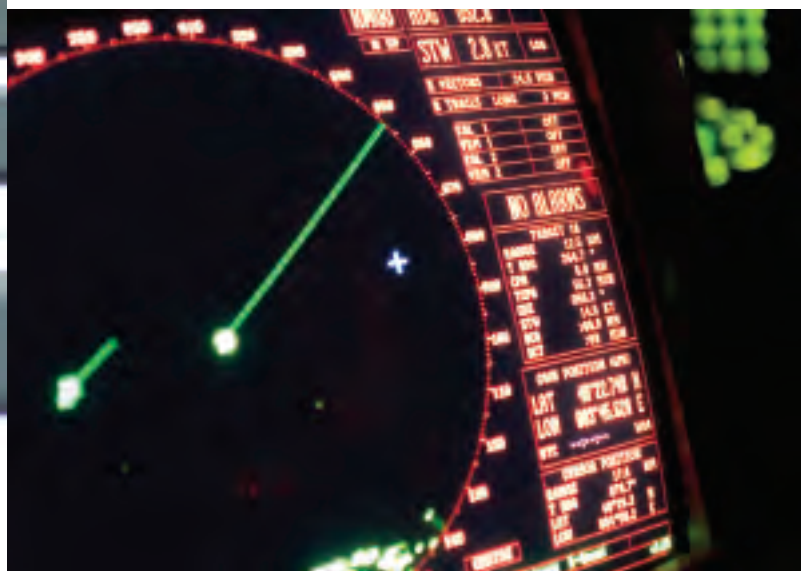
Accommodation for 68 in 5 double, 6 single, 1 four berth and 6 dormitories with 8 pipe-cot berths.

The current dormitories could be easily removed during a refit to make way for larger luxury cabins.



Two 333kw Mercedes auxiliary engines power the brig to 9 knots with bridge controls on both wings.

The hull is divided into six water tight compartments and complies with the damage stability rules set out by the U.K. Maritime and Coastguard Agency.





Both masts have steel lowers and timber top masts reaching a height of 36 metres above the water.

The rigging was designed by the world famous Michael Willoughby using a traditional approach and modern materials.

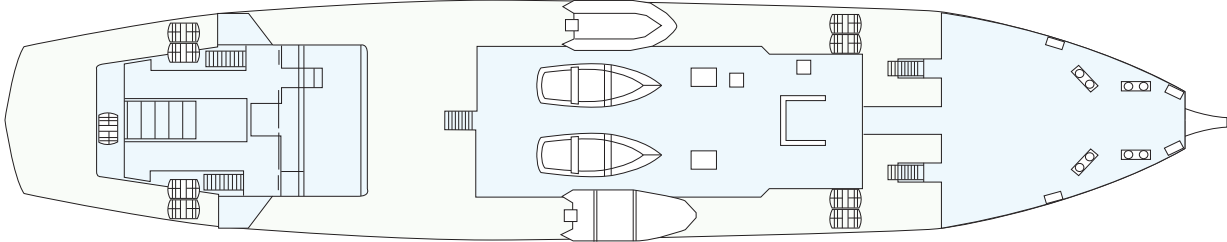


Two deckhouses, one containing the wheelhouse, Master's cabin and ward room, the other containing the fully equipped galley, pantry and mess room with service for 48 persons.

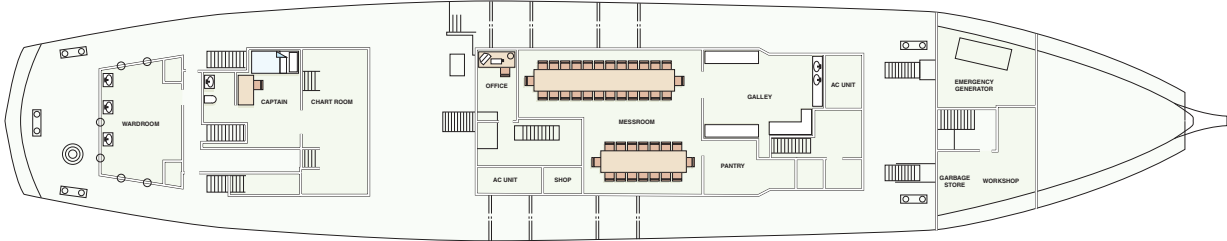
An extremely rare opportunity to own one of the world's most magnificent sailing ships.

PRINCE WILLIAM

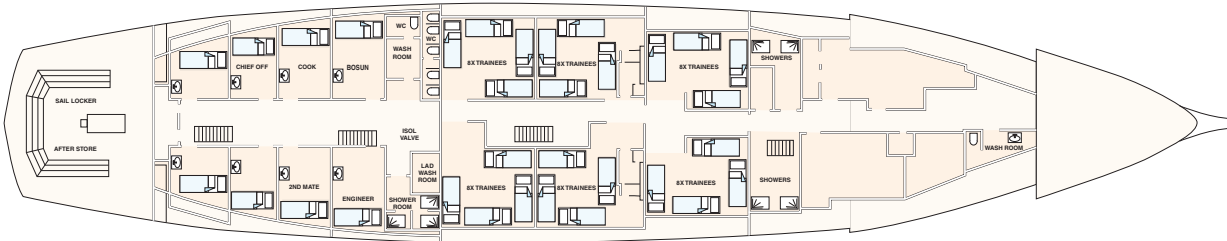
GENERAL ARRANGEMENT



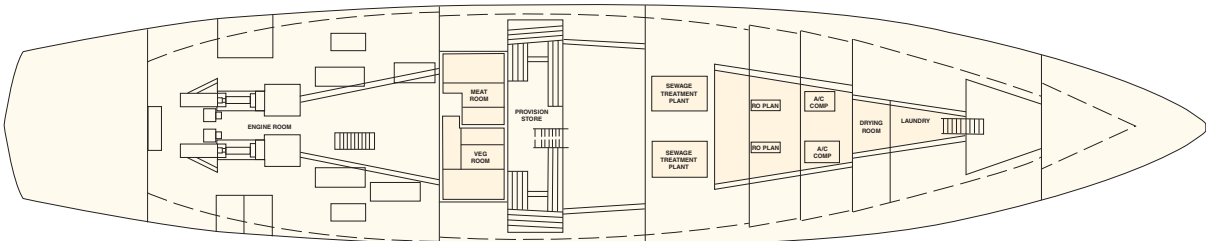
FORECASTLE DECK



MAIN DECK



LOWER DECK



TANK TOP

OUTLINE SPECIFICATION

Length:	Hull 50.2m. Bowsprit 9.15m. LOA 59.35m / 194ft 8in
Type:	Square rigged sail training vessel
Sail Area:	949 square metres (Brig Rig 18 sails on two masts)
Beam:	9.91m / 32ft 5in
Draft:	Maximum 4.8m / 15ft 8in
Masthead Height:	36.5m / 123ft above the water
Gross Tonnage:	493
Net Tonnage:	198
Loaded Displacement:	635
Water Tank Capacity:	Drinking 24.3 cu. ms. Washing 19.0 cu. ms. Ballast: 16.0 cu. ms
Year Launched:	2000 / 01
Naval Architect:	Burness, Corlett & Partners Ltd
Builder:	Hull: Abeking & Rasmussen Schiffs Und Yachwerft Finishing and interior: Appledore Shipyard Devon, UK
Construction:	Steel hull, aluminium superstructure, steel masts and lower yards
Classification:	Lloyds 100A1 Sailing Ship LMC UMS
MCA Compliant:	Yes. Coded as a large commercial yacht under the MCA large commercial (Mega) yacht code
Cabins:	6 single. (one en-suite) 5 double 1 four berth 6 dormitories each with 8 pipecot berths
Complement Sleeping:	68
Complement Cruising:	69
Lifesaving Equipment:	69 immersion suits 8 x 25-person 1 x 6-person liferafts 1 x Zodiac 4.7m Rescue Rib, 40hp Yamaha outboard
Navigational Equipment:	1 x Decca Bridgemaster 9Ghz radar 1 x Furuno FRS 1000 9Ghz radar 1 x Furuno NX 500 Navtex 1 x Saab R4 AIS. 1 x Ships security alert system 1 x Tokimec Gyro with bridgewing repeaters 1 x Lillie and Gillie magnetic compass with Flux Gate interface Full Brookes and Gatehouse wind instrumentation with repeaters
Recreation:	1 x Humber 5.50m RIB 2 x 50hp outboards 2 x Orkney rowing boats
Access:	1 x 6m and 1 x 3m alloy gangways
Cruising Area:	Unrestricted
Engines:	2 x MTU 333 kw
Fuel Capacity:	34 cu.ms
Bow Thruster:	1 x 80 kw
Generators:	4 x Cummins 80 kw
Power Supply:	240v 50 hz
Plant:	Air conditioning, reverse osmosis water generation, sewage treatment plant (Type approved/USCG accepted)
Cruising speed:	9 knots under power, maximum 13 knots under sail
Fuel Consumption:	83 Litres per hour / 2 tons per day under engines at full speed 8 litres per hour / 0.2 tons per day under sail

For further information please contact:

Chris Law.

Chief Executive.

Tall Ships Youth Trust.

2A The Hard, Portsmouth, Hants, PO1 3PT, UK.

Telephone: +44 (0) 2392 832055

Email: Chris.Law@tallships.org

