



Coast Guard Deployable Operations Group





11 CG Mission Areas

Public Law 107-296



- **Ports, Waterways & Coastal Security**
- **Illegal Drug Interdiction**
- **Undocumented Migrant Interdiction**
- **Defense Readiness**
- **Other Law Enforcement, e.g. Exclusive Economic Zone enforcement**
- **Search and Rescue**
- **Marine Safety**
- **Aids to Navigation & Waterways Management**
- **Ice Operations**
- **Marine Environmental Protection**
- **Living Marine Resources, e.g. fisheries enforcement**



Challenges



- **95,000 miles of shoreline**
- **25,000 miles of navigable waterways**
- **3.4 million square miles of Exclusive Economic Zone**
- **Approximately 3200 facilities to inspect**
- **361 ports**
- **13 million registered recreational vessels**
- **77 million recreational boaters**
- **Security Plans for 7,600 foreign flagged vessels that make 60,000 ports of call each year**
- **2 billion tons of foreign and domestic freight**
- **Approximately 8 million containers arrive yearly carrying 187 million metric tons of cargo**
- **5 billion barrels of oil imported**
- **and over 8,800 U.S. flagged barges**



CG “Operational Trident”



- **Multi-Mission Shore Based Forces**
 - Sectors & small boat stations
 - First units established 1915
- **Maritime Patrol and Interdiction Forces**
 - Afloat and aloft
 - First cutters 1791, first air station 1926
- **Deployable Specialized Forces**
 - First units (National Strike Force) established 1973



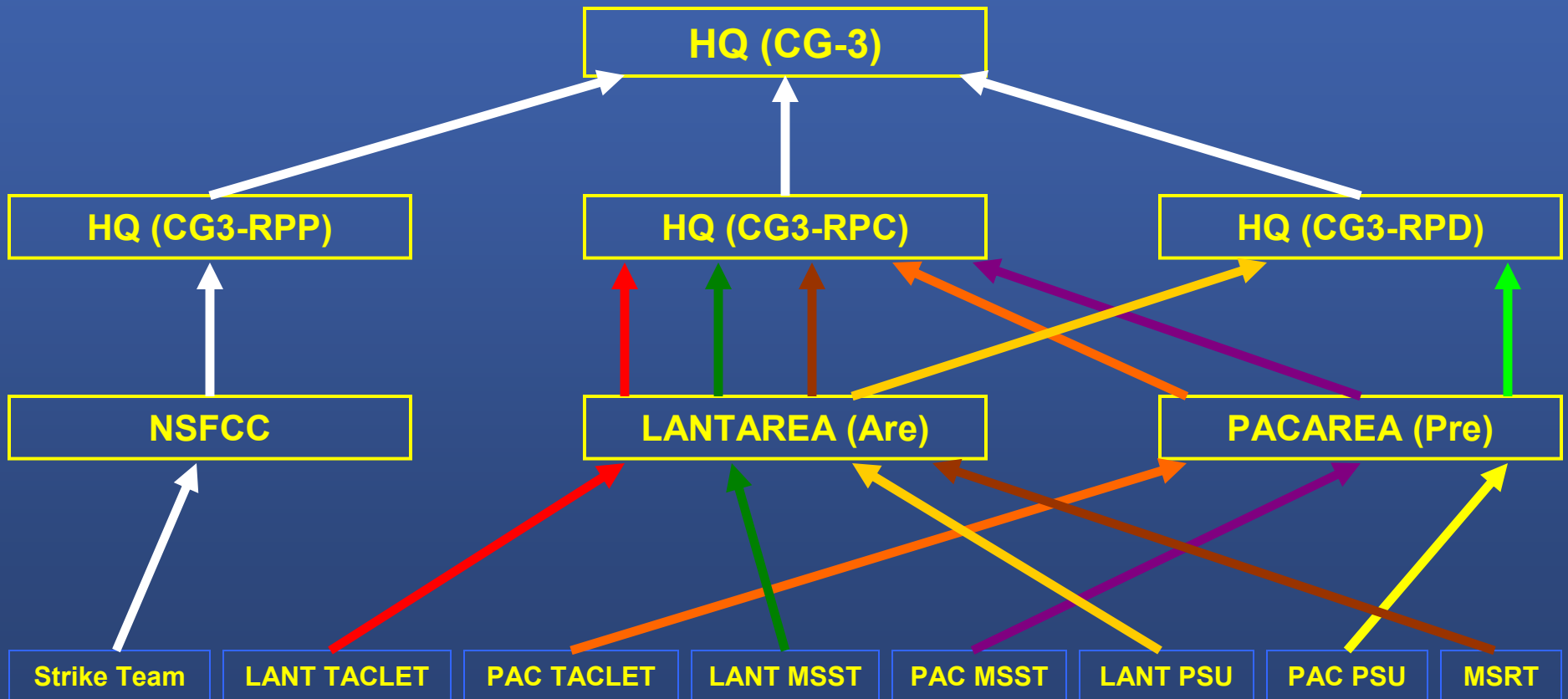
Intent



- For CG Deployable Specialized Forces: Establish a single command authority to rapidly provide Coast Guard, DHS, DoD, DoJ and other inter-agency operational commanders adaptable force packages drawn from the Coast Guard's deployable specialized force units.

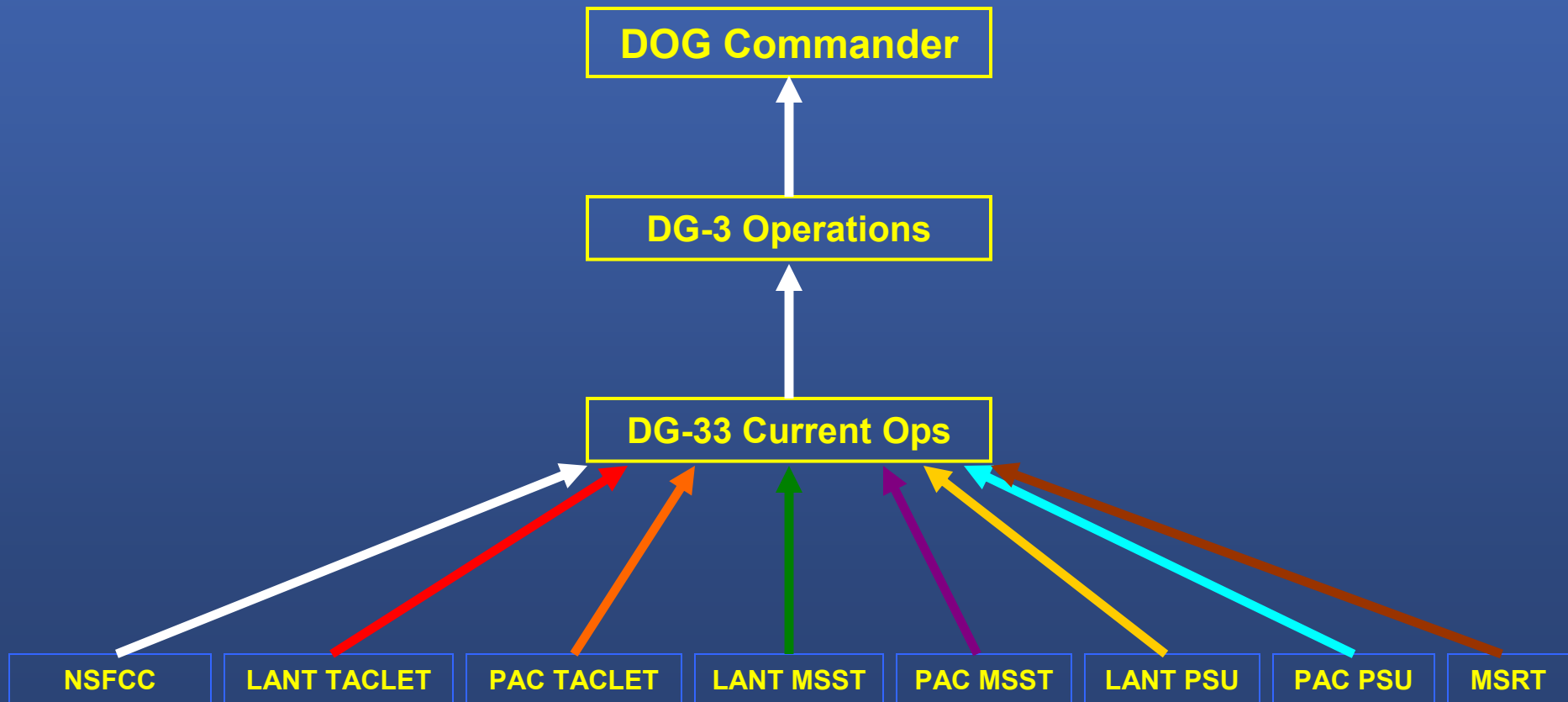


Current Chain of Command





DOG Chain of Command





DOG Mission



“...to provide properly organized, equipped, and trained DSFs to support CG, DHS, DoD, and interagency operational & tactical commanders as directed.”

- *Force Manager*: Responsible for standardizing, as appropriate, the manning, equipping, and training of DSF.
- *Force Provider*: Solely responsible for providing operational commanders with DSF packages. It will coordinate & execute all DSF deployments.



Deployable Specialized Forces (DSF)



- National Strike Force (NSF)
- Tactical Law Enforcement Teams (TACLETs)
- Port Security Units (PSUs)
- Maritime Safety and Security Teams (MSSTs)
- Maritime Security Response Team (MSRT)



National Strike Force



- 3 Strike Teams (Lant, Pac, Gulf) / 328 personnel
- Domestic and International
 - Oil
 - Hazmat
 - Chemical, Biological, Radiological Response





TACLET



- 2 units / 180 personnel
- Drug Interdiction
- Maritime Interception Operations
- Unit & International Training





Port Security Unit



- 8 units / 1144 personnel
- Primarily Expeditionary Port Security

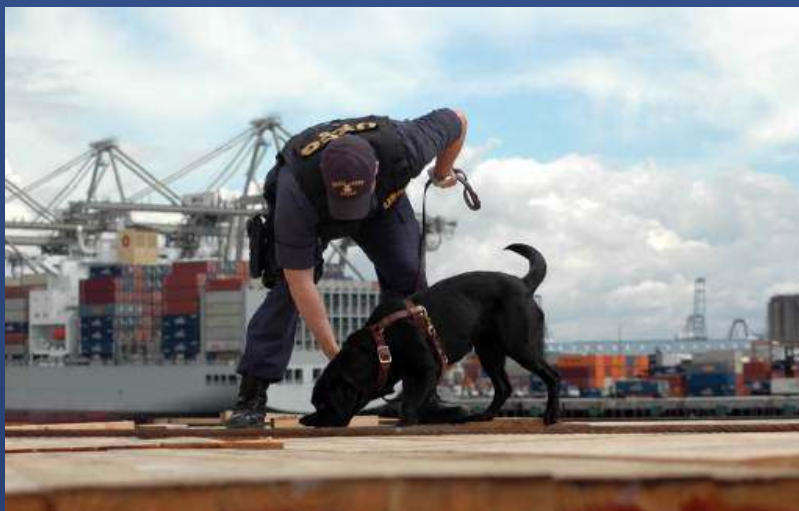




MSST



- 12 Units / 924 personnel
- Port, Waterway, & Coastal Security
- Anti-Terrorism
- Special Capabilities





MSRT



- 1 unit / 208 personnel
- Counter-terrorism
 - A rapidly deployable response unit capable of applying advanced interdiction skills in a hostile operational environment





Value Added



- Common training, tactics, techniques and procedures developed across unit types
- Coordinated administrative, intelligence, operational, logistics, planning, command and control architecture, training, exercise and financial functions
- Better integration with, and support of DHS, DoD, DoJ and other Federal, state and local partners
- Unitary, timely, and reliable force employment for maritime threat and disaster response



Additional Benefits

- Complete understanding and mastery of the inventory of CG and other government agency forces available for deployable operations
- “Community of Interest” established in CG to support long term development of individual skill sets



Tailored Adaptive Forces



DOG C2 Element & Logistics Support

MSRT

AI/FP
CBRNE

MSST

Boat Forces
PWCS

PSU

Logistics
Security

TACLET

LE
Security

NSF

CBRNE
Env Response

TAILORED ADAPTIVE DSF



Questions?